

BOARD OF DIRECTORS

Teresa Higgins – Chair
Michael Seaman – Vice Chair
Kathy Stricklin – Secretary
Laura Lavallee – Director
Chris Fischer – Director



FULTON-EL CAMINO RECREATION AND PARK DISTRICT

SPECIAL MEETING - BOARD OF DIRECTORS

AGENDA

Immediately following the regularly scheduled board meeting on
Thursday, June 18, 2026 | 6:30 p.m.
Richard T. Conzelmann Community Center
2201 Cottage Way, Sacramento, CA 95825

Board Room

TELECONFERENCE ACCESS (Supplemental)

Zoom: <https://us02web.zoom.us/j/85394669812>
Dial-In: +1 (669) 900-9128 (U.S.)

Members of the public may attend the meeting in person at the location listed above.

MISSION STATEMENT

Enhance the quality of life for our community by providing park facilities and recreation programs of exceptional quality while maintaining and protecting our parklands for future generations.

1. CALL TO ORDER / ROLL CALL

2. PLEDGE OF ALLEGIANCE

3. PUBLIC COMMENT

Non-Agenda Items

Members of the public may address the Board on items **not listed on this agenda** that are within the subject matter jurisdiction of the District. Individual comments are limited to **three (3) minutes**, unless otherwise determined by the Chair. Pursuant to the Brown Act, the Board **may not discuss or take action** on any item not appearing on the agenda. Board members may:

- Ask brief clarifying questions
- Request staff to report back at a future meeting
- Refer matters to staff

Members seeking a response to a specific question are encouraged to contact the General Manager.

Agenda Items

Public comment on agenda items will be taken **at the time each item is considered**.

Public Comment Procedures

- **In person:** Complete a speaker card and submit it to the Clerk of the Board.
 - **Zoom/Phone:** When recognized by the Chair, state your name and the item you wish to address.
-

4. DISCUSSION AND DIRECTION ITEMS (Motion or Approval Required)

The Board will review and discuss taking appropriate action on the following matters:

4.1 Approve the Contract with Waterworks Aquatic Management to Replace the Howe Park Pond Pump and Fountain System

The Board will consider approving the purchase and installation of the pump and fountain systems at the Howe Park pond to mitigate the current failing system.

5. ADJOURNMENT

6. SIGN ALL APPROVED DOCUMENTS

Next Regular Board Meeting on Thursday, July 18, 2026

AMERICANS WITH DISABILITIES ACT ACCOMMODATIONS – *If you are a person with a disability and you need a disability-related modification or accommodation to participate in this meeting, then please contact Mike Chahal at (916) 927-3802 or fax (916) 927-3805. Requests must be made as early as possible, and at least three full business days before the start of the meeting.*

BOARD MEETING MATERIALS - *Non-confidential documents or writings for items on this agenda submitted to the Board of Directors after distribution of the Board Packet are available to the public at the same time at the address listed above during regular business hours.*

MEETING RECORDINGS – *Members of the public are hereby notified that meetings of the Board of Directors are recorded. Requests for the audio recordings be directed to the Director of Finance and Administration, Mike Chahal.*

**FULTON-EL CAMINO RECREATION AND PARK DISTRICT
SPECIAL MEETING OF THE BOARD OF DIRECTORS
June 18, 2026**

ITEM NO. 4.1

Approve the purchase and installation of a new floating fountain system for the Howe Park pond in the amount of \$64,104 and authorize the General Manager to execute all necessary documents

STAFF REPORT

TO: Board of Directors

FROM: Emily J. Ballus, General Manager

SUBJECT: Approve the purchase and installation of a new floating fountain aerator system for the Howe Park pond in the amount of \$64,104 and authorize the General Manager to execute all necessary documents

DATE: June 18, 2026

RECOMMENDATION

Approve the purchase and installation of a new floating fountain aerator system for the Howe Park pond in the amount of \$64,104 and authorize the General Manager to execute all necessary documents.

BACKGROUND

The Howe Park pond aeration fountain system has experienced ongoing operational and maintenance issues for several years. In an effort to extend the useful life of the system, the District has invested in numerous repairs and upgrades, including installation of a new Variable Frequency Drive (VFD), replacement of the pump and motor, and multiple service calls to address recurring failures. Over the past year, the District has spent approximately \$14,835 on repairs and maintenance related to the fountain system.

Despite these efforts, the system continues to experience recurring failures and operational challenges. The existing design utilizes a 15-horsepower pump located in the equipment shed approximately 20 feet above the pond water surface. This configuration creates persistent priming issues, increases wear on system components, and reduces overall operating efficiency.

Most recently, the VFD failed, requiring the pump to be hardwired in order to maintain operation. While this temporary solution keeps the fountain operational, it has resulted in continuous overflow into the storm drain system and increases the risk of equipment damage should the pump lose prime and run dry.

In addition, portions of the underground fountain infrastructure have deteriorated over time. One of the three fountain lines has been out of service for nearly ten years. Restoring the existing three-head fountain system would require significant investment in aging underground infrastructure without addressing the underlying design limitations that have contributed to the system's ongoing reliability issues.

The Howe Park pond also serves as a community fishing resource. The District regularly stocks fish in partnership with the California Department of Fish and Wildlife and hosts youth fishing clinics and other public recreation programs. The current fountain intake system lacks adequate wildlife protection and routinely draws in fish, crawdads, and waterfowl, resulting in unnecessary wildlife loss and impacting the District's environmental stewardship efforts.

The operational benefits of working fountains

- Improves water quality by adding oxygen and keeping water moving.
- Helps control algae and surface scum, which can make ponds look unsightly and interfere with irrigation intakes.
- Reduces odors that can develop when organic matter decomposes in low-oxygen conditions.
- Supports aquatic and waterfowl life, including ducks, fish and beneficial microorganisms.
- Limits stagnant zones, which can reduce mosquito breeding and improve overall pond health.

FISCAL IMPACT

Staff obtained proposals for both repair and replacement of the existing fountain system.

a). Repair costs are as follows:

- \$63,860 to repair the system without draining the pond.
- \$53,860 to repair the system with the pond drained.

b). The cost to replace the system with a new floating fountain is \$64,104.

The proposed replacement consists of a self-contained floating fountain unit installed directly within the pond. This design eliminates the existing priming issues, reduces mechanical strain on equipment, improves operational efficiency, and incorporates an intake screen to protect fish and wildlife. The contractor can also utilize the existing center fountain line as a conduit for new electrical cabling, minimizing site disturbance and reducing installation costs.

Unlike the repair option, which would continue to rely on aging infrastructure and existing system design limitations, the replacement option provides a new, warranted system designed specifically for pond applications.

DISCUSSION

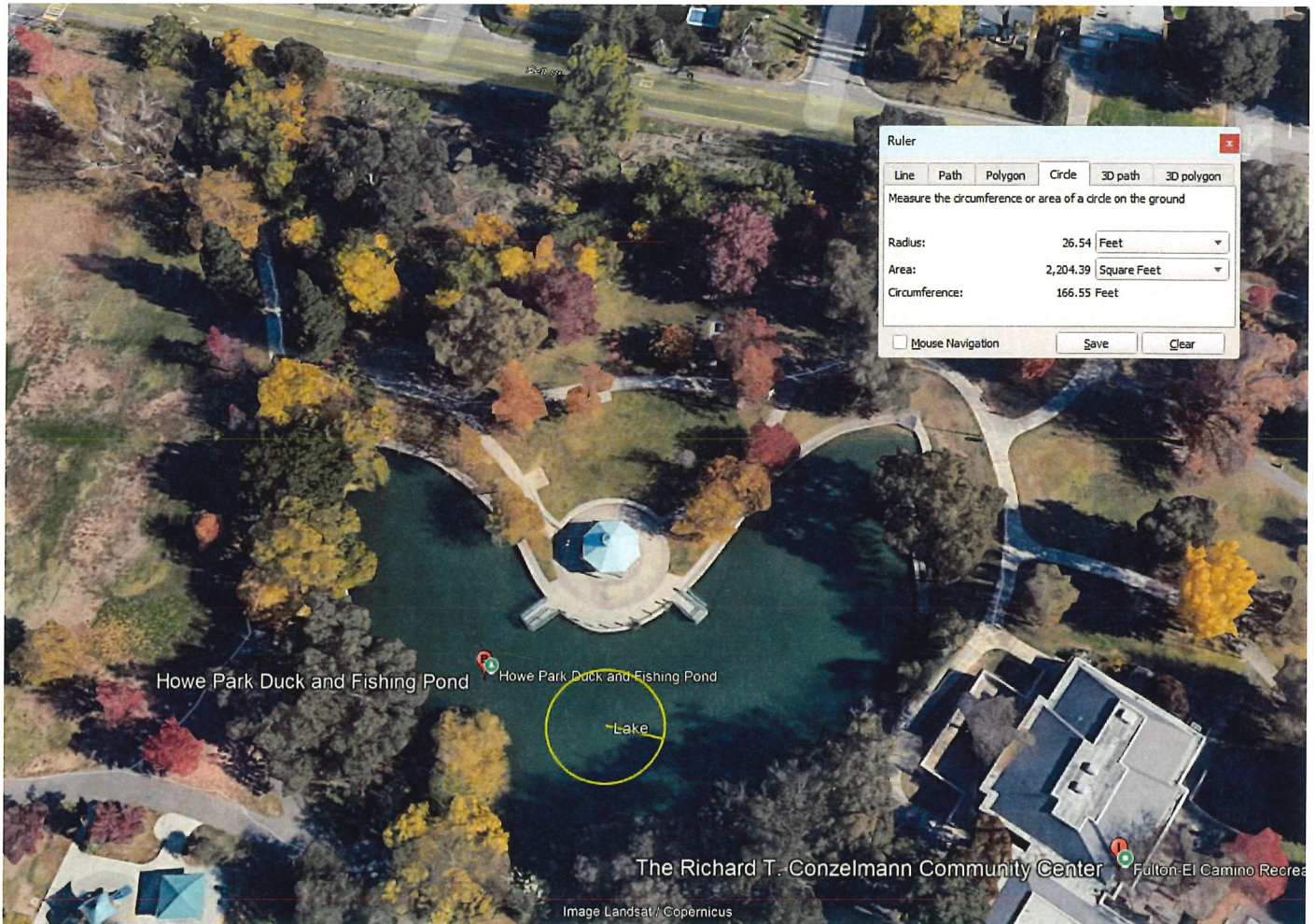
Staff evaluated both repair and replacement options and determined that replacement provides the best long-term value for the District. While repairing the existing system would restore functionality, it would require a substantial investment in aging infrastructure that has experienced recurring failures and would not address the underlying design deficiencies.

For approximately the same cost as repairing the existing system, the District can install a new, warranted fountain system that improves reliability, reduces future maintenance needs, enhances environmental protection, and eliminates many of the operational challenges associated with the current configuration.

Staff believes replacement represents the most cost-effective, sustainable, and responsible long-term solution..

ATTACHMENT

- Bid for Replacement of the Pond Pump



HOWE PARK POND

7.5HP MASTERS GRAND-LIGHTS-WIND SENSOR- DIFFUSED AERATION



WATERWORKS AQUATIC MANAGEMENT

Generated by AquaMaster Online Distributor Portal Software
Quote created on 2026-03-25 10:39 (GMT-07:00)

Quote Form

Quote ID:	3b876797-e2a3-425f-9387-2d026fd13b81	Quoted By:	Jordan-Waterworks Aquatic Management
Quote Number:	FECRPD- 032526	PO Number:	Howe Park 7.5hp Master Grand-lights- diffused air
Quoted For:	David Price- FECRPD		
Address 1:	2201 coattage way		
Address 2:			
Address 3:			
City:	sacramento	State/Province:	ca
Zip/Post Code:	95825	Country:	usa

Line	Part #	Description	Qty	MSRP	Disc %
1	94103	AquaAir® Ultra 2 and 3, (1) 0.5HP, 120V	1	\$2,780.23	
2	760025-AA	Panel, AquaAir, 120V 15A	1	\$890.32	
3	940054	Super Sink Weighted Tubing, 1/2" x 500' Spool	1	\$702.23	
4	940530	Diffuser Assembly, 12" Single, with Check Valve and Weighted Base	2	\$639.54	
5	860829	Circuit Breaker, 7.5HP, 208-240V 60A, QO-EPD, 2 Pole	1	\$359.74	

Line	Part #	Description	Qty	MSRP	Disc %
6	760025-1WC	Panel, Single Stage Wind Control, 120V	1	\$2,357.52	
7	860911	Cable, 18/3, for Anemometer	500	\$590.00	
8	MGS5472-3SC	Masters Grand Series®, 7.5HP 220-240V 3PH 60Hz	1	\$15,336.20	
9	3003052	Nozzle Assembly, 7.5HP Crown and Wide Geyser, Masters Grand Series, (BFP)	1	\$550.66	
10	861083XL	Cable Assembly, 6/4, PPE 50', XL Disconnect	1	\$1,227.60	
11	861083	Cable, 6/4, PPE	300	\$5,451.00	
12	5472-3-F	Panel, 7.5HP 220-240V 3PH, LED Light Ready	1	\$5,024.28	
13	860024ALC3	Cable Assembly, 14/3, 50', 3 Pin ALC	1	\$289.78	
14	860024	Cable, 14/3, SEOOW	300	\$738.00	
15	860060	Photocell	1	\$59.69	
16	3000936-316	Lights, LED, 4 Fixture, 35W, 1-5.5HP, Volcano III, 7.5-10HP, Masters Grand Series, with Light Brackets, 316 SS	1	\$3,562.22	
17	CBA35-W	Color Board Assembly, 35W, Cool White	4	\$963.40	
Subtotal:				\$41,522.41	
Discount %:			0.0%		\$0.00
Tax Rate (%):			8.75%	\$3,633.21	
Freight:					
Installation Cost:			\$18,948.72	\$18,948.72	
Total:				\$64,104.34	

Quote Notes:

Quote available until April 30, 2026. Due to fluctuation of materials in the market, price increases may change month to month at factory level. Freight factored at time of shipment. Freight will be invoiced as separate line item directly to customer. Installation includes: 1. Equipment shed/ vault modification of plumbing and electrical including cutting down pipes to be used as sleeves for SOOW cable to enter pond from shed,

modification of electrical to new control panel, removal of failed equipment including vfd, diffused aeration, and any other component that is no longer operational or necessary. Scuba & boat crew will be necessary to pull cable through existing pipe into lake. Fountain anchoring via 3 points in pond to restrict fountain from spinning. installation of diffused aeration including installation of approximately 500' of submerged air tubing. Air heads to be installed where #1 & #3 fountain heads are currently located. Fountain to be centered in pond above #2/ center fountain. Anything not specifically listed or mentioned as part of materials or installation is not included with quote.



BRINGING WATER TO LIFE

16024 County RD X, Kiel, WI USA 53042

920-693-3121

www.aquamasterfountains.com

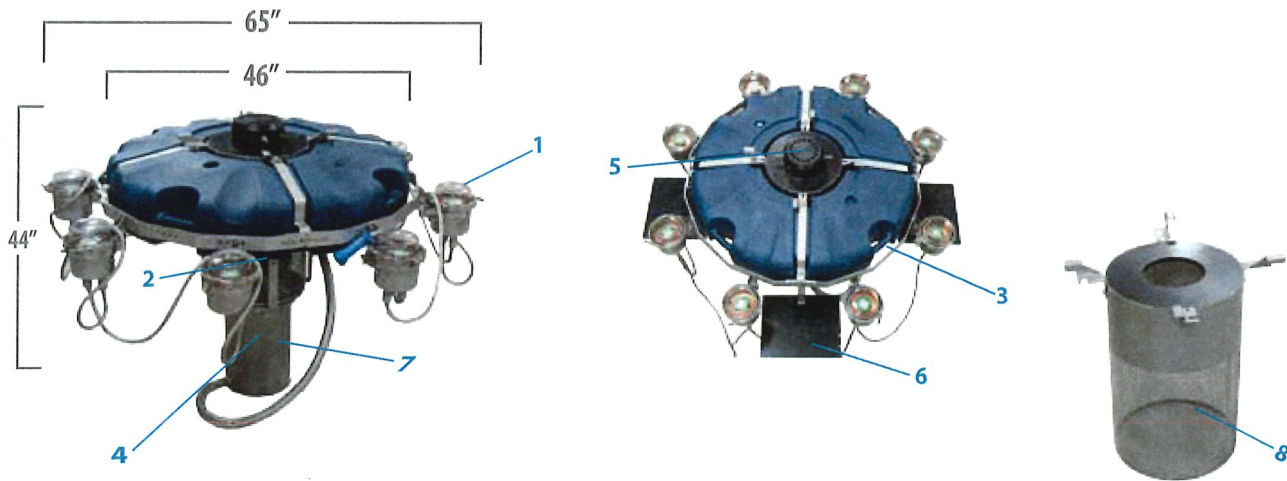
MASTERS GRAND SERIES CROWN & WIDE GEYSER BASIC FLOW PATTERN (BFP)



HORSEPOWER	7½	10
HT x DIA ft UPPER	28 x 6	N/A
HT x DIA ft LOWER	11 x 54	N/A
ELECTRICAL RATING Ph VOLTAGE AMPS	1 220-240 42	1 220-240 60
	3 220-240 26.4	3 220-240 36
	3 440-480 13.2	3 440-480 18
HT x UPPER	7.8 x 1.5	N/A
HT x DIA m LOWER	2.9 x 18.3	N/A
ELECTRICAL RATING Ph VOLTAGE AMPS	3 380-415 12	3 380-415 18

60Hz
50Hz

MASTERS GRAND SERIES® DESIGN



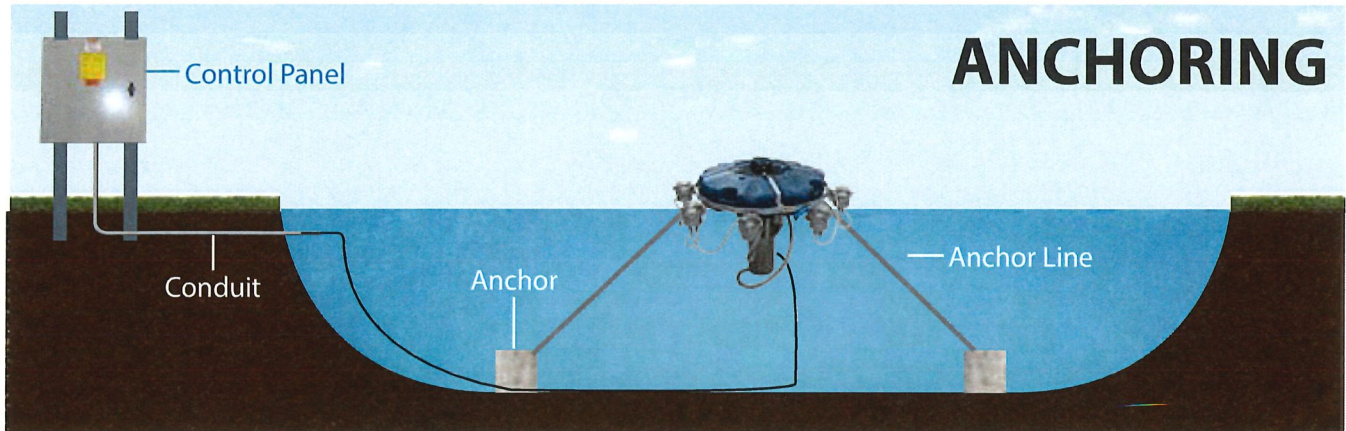
Masters Grand Series

- 1 - Tool less series 316 stainless steel light bracket
- 2 - Patented, high-efficiency series 316 stainless steel impeller system
- 3 - Handles on float/tie downs
- 4 - Exclusive custom-designed oil-cooled energy efficient motors with series 316 stainless steel motor housing, top plate and shaft

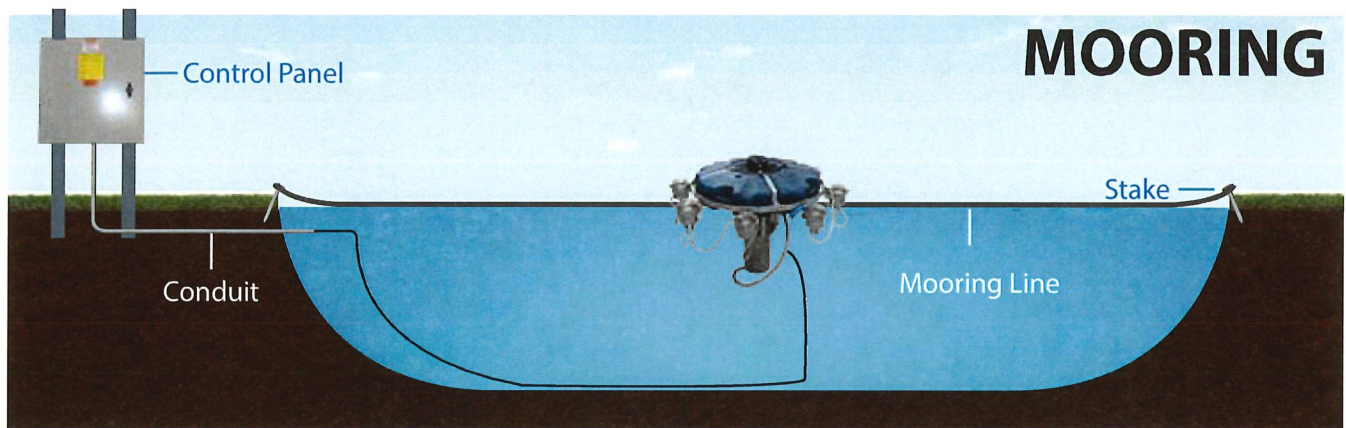
- 5 - Interchangeable twist-lock nozzles
- 6 - Optional stabilizers to help reduce fountain rocking
- 7 - Minimum operating depth 4ft
- 8 - Removable (without tools) large capacity, rigid 18 gauge series 316 stainless steel intake screen



INSTALLATION

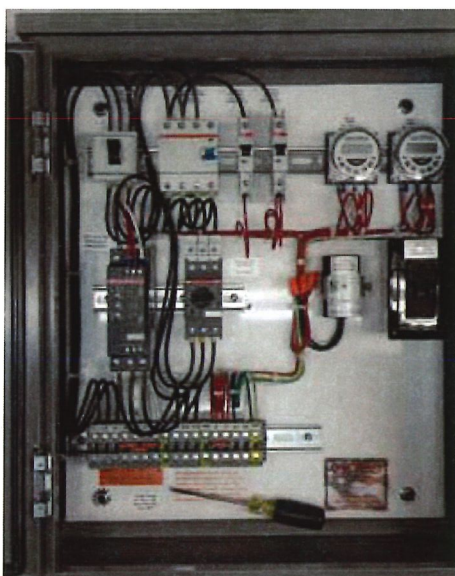


ANCHORING



MOORING

CONTROL PANEL



CONTROL PANEL COMPONENTS

- Outdoor rated, lockable enclosure constructed of galvanized steel powder coated gray
- Standard enclosure sizes:
20" x 16" x 10" (7.5HP 1PH and 3PH)
- Digital timers with battery backup
- LED lighting circuit included in all control panels
- Custom Control Panels for multiple units and options available
- Overcurrent protection
- Ground fault protection
- Motor contactor and overload-7.5HP 3PH
- Capacitors (single phase only)
- Soft Starter and Manual Motor Protector (7.5HP 3PH)





AI generated image of
new fountain in pond



SPECIFICATIONS
MASTERS® GRAND SERIES FLOATING FOUNTAIN AERATOR SYSTEM (7.5HP)

1.0 GENERAL

1.1 DESCRIPTION

- A. Manufacturer shall furnish a floating fountain aerator system capable of pumping water from below the surface of a body of water.
- B. A submersible motor shall draw water into an impeller housing where it shall be pumped into the atmosphere in the form of a decorative spray - type fountain.
- C. The water droplets shall become oxygen enriched and return to the surface, therefore transferring oxygen from the atmosphere into the body of water. Surface area of water body shall also be increased through constant wave action resulting in additional atmospheric oxygen transfer.
- D. This repeated action shall effectively mix and de-stratify the body of water and distribute the dissolved oxygen continuously.
- E. Fountain aerator system shall include an oil-cooled motor sealed in a stainless steel housing, with shaft mounted 316 Stainless Steel impeller, attached to a float. This assembly shall be connected to an electrical control panel by underwater power cable, all of which as specified in SECTION 1.2.

1.2 AERATOR COMPONENTS DESCRIPTION

- A. **7.5HP Float** shall be made of linear low density polyethylene, with a minimum 14" discharge area. This area shall be protected by a discharge guard. Four series 316 stainless steel brackets shall be attached to the float, around which a protective series 316 stainless steel intake screen shall be mounted. The motor housing shall be attached to the brackets. Four anchoring point shall be part of the float. Up to eight optional lights shall be capable of being installed onto an optional accessory ring around the float.
- B. **Impeller** shall be precision machined and balanced, formed using 316 Stainless Steel. The impeller is connected to the motor shaft by a series 316 stainless steel bolt and lock washer.
- C. **Tube Support Assembly** shall be assembled from an adapter plate (PVC) and a lower ring (Acetal). The tube support assembly shall be assembled to accept the float tube and capable of being bolted to the motor housing. The tube support assembly shall house the 316 Stainless Steel impeller.
- D. **Flow Straightener (where applicable)** shall be precision machined from acetal material and shall have numerous curved vanes. The vanes shall take the spinning discharge water from the impeller and convert it to a straight, vertical flow. The gap between the vanes shall be at least 9/16" wide and have a total length not less than 3" long. It shall be factory installed for various optional spray patterns.
- E. **Motor Housing** shall be Series 316 Stainless Steel. 7.5HP shall have a permanent series 316 stainless steel electrical hub welded on the side of the housing to allow electrical cable entry.
- F. **Motor** shall contain a 316 Stainless Steel shaft for superior corrosive resistance. Single Phase shall be a permanent split phase capacitor run motor and Three Phase shall be an induction motor. The rotor shall be dynamically balanced and run in a ball bearing supported system. The stator windings shall be single dipped and baked with a Class F insulation, designed for oil immersion operation. The oil shall be of a synthetic food grade quality, specially formulated for lubrication, meeting FDA Regulations. The oil shall provide continuous lubrication of bearings

and internal seals and further function as an efficient heat transfer medium, allowing the motor to operate at 3450 RPM, at relatively low temperatures. The motor shall be contained in the motor housing by a series 316 stainless steel top plate.

- G. **Seals** used to protect the motor against water or oil leakage shall be a mechanical rotating type assembly composed of Silicon carbide and Series 316 Stainless Steel positive drive system. The positive drive assembly shall be attached to the motor shaft with four allen head set screws. These set screws shall be tightened into pre-drill dimples drilled into the shaft to prevent the seal assembly from slipping at any time the motor shaft is rotating, thus creating a non-slip positive drive system. All elastomers shall meet UL 778 requirements. This assembly shall then be encapsulated and protected within a series 316 stainless steel cartridge assembly. This assembly shall be filled with a synthetic food grade oil meeting FDA regulations.
- H. **Underwater Power Cable** shall be UL Listed and specifically designed for underwater use. The conductors are flexible, stranded copper wire sized for the amp draw and length of run. The conductors shall be resistant to oil, water and cracking. Power cable shall be fitted with a cable strain relief device, located within five feet of motor housing, capable of being attached to the latch mounted on the frame. This will ensure that no potential damage can occur to any cable connections, due to tension on the cable.
- I. **Underwater Power Cable Disconnect** shall be located approximately five feet from the series 316 stainless steel motor housing. It is a two piece molding assembly made of thermoplastic material meeting the UL 778 requirements. The cap half of this disconnect shall be permanently attached to a wire reinforced braided hose assembly. The other end of this hose assembly shall be attached to a series 316 stainless steel hub which is welded to a series 316 stainless steel motor housing. This complete assembly shall be sealed with a flexible potting compound.
- J. **Fasteners and Anchor Connectors** shall be Series 316 Stainless Steel.
- K. **Electrical Control Panel** specifications, see SECTION 3.
- L. **Intake Screen** shall be made of 18 Gauge, Series 316 Stainless Steel. The intake screen shall have a minimum of 51% open area.
- M. **Nozzles** (where applicable) shall be interchangeable without the use of tools, in most cases. Nozzles will be sealed to the float tube utilizing an o-ring to prevent leakage.

FOUNTAIN AERATOR DETAIL SPECIFICATIONS

2.0 DETAILED INFORMATION

- 2.1 This specification is intended to provide prospective bidders the necessary information pertaining to the fountain aerator(s) specified for the _____ Project.
- 2.2 The MOTOR(S) shall be 7.5HP, operating at _____ Volts, 60Hz, _____ Phase at 3450 RPM.
- 2.3 The MASTERS® GRAND SERIES MODEL(S) specified shall be the _____ MODEL NUMBER _____ capable of creating a _____ pattern. It shall come complete with an electrical control panel, protective intake screen to be attached to a float assembly and _____ feet of _____ gauge, 4 conductor underwater power cable.
- 2.4 The fountain aerator shall produce a SPRAY PATTERN _____ feet in diameter and _____ feet in height.

Please refer to TABLES 1, 2 and 3 to assist in the completion of SECTION 2.0

FOUNTAIN AERATOR DETAIL SPECIFICATIONS (cont.)

3.0 ELECTRICAL CONTROL PANEL COMPONENTS DESCRIPTION

- A. **Electrical Enclosure** shall be NEMA 3R type, galvanized and powder-coat painted gray in color. Panel shall be both lock and mount capable.
- B. **Ground Fault Protection**
GFCI Breaker shall provide overload protection and be capable of disconnecting all incoming electricity from the control panel or a molded case breaker shall provide overload and short circuit protection, while a residual current device or ground fault relay kit rated at 30 mA shall provide ground fault protection.
- C. **Control Breaker** shall provide overload protection and be capable of disconnecting all incoming electricity from the control panel.
- D. **Motor Contactor** shall provide a means for disconnection of all motor leads. It shall be a magnetic, across the line starter type.
- E. **Overload Relay** shall provide overload protection by means of a bi-metallic element. It is adjustable over the full load amperage draw of the motor. It shall have a visual trip indicator, test button and manual/auto reset modes.
- F. **Soft Start (three phase ONLY)** shall provide ramped starting and stopping to minimize electrical and mechanical stresses to the motor and power source.
- G. **Digital Timer** shall be a single pole type, rated at 120 Volts, 16 Amps, capable of 8 ON / OFF functions per day for 7 days. Digital timer has a lithium battery to retain the programming when power is disconnected.

3.1 SAFETY TESTING CONTROL PANEL

The electrical control panel shall be tested and approved as a complete unit. It is inspected and listed by Underwriters Laboratories, Inc. under Category 778: Submersible Aerators and Aerating Fountain Pump Systems.

3.2 ACCEPTABLE MANUFACTURER

This fountain aerator electrical control panel, as specified in Section 3.0, shall be manufactured by AQUAMASTER® FOUNTAINS AND AERATORS, 16024 County Rd X, Kiel, WI 53042, (800) 693-3144 or approved equal.

3.3 INSTALLATION

The electrical control panel must be installed in accordance with the installation instructions, in compliance with all local and National Electrical Code requirements. This should be done by a licensed electrical contractor. Any alterations to or substitution for items in this system, unless allowed by the installation instructions, will void the Underwriters Laboratories Listing and will void the product warranty. It may also create a hazardous installation. Read the instructions thoroughly before starting the installation and follow them carefully throughout.

3.4 ELECTRICAL CONTROL PANEL WARRANTY

All control panels and their components have a 3 year warranty on parts and labor.

FOUNTAIN AERATOR DETAIL SPECIFICATION (cont.)

4.0 SAFETY TESTING

The floating fountain aeration system shall be tested and approved as a complete unit. This approval must meet Underwriters Laboratories Inc. requirements in compliance with Category 778: Submersible Aerators and Aerating Fountain Pump Systems. Individual component testing and wet niche environment equipment approval are not acceptable.

4.1 ACCEPTABLE MANUFACTURER

This fountain aerator, as specified in Sections 2.2, 2.3 and 2.4, shall be manufactured by AQUAMASTER® FOUNTAINS AND AERATORS, 16024 County Rd X, Kiel, WI 53042, (800) 693-3144, or approved equal.

4.2 INSTALLATION

All AQUAMASTER® FOUNTAIN AERATORS are designed and built to be installed with an AQUAMASTER® UL Listed control panel and to be operated as a complete system. Any alterations to or substitution for items in this system, unless allowed by the installation instructions, will void the UL Listing and will void the product warranty. It may also create a hazardous installation. Read the instructions thoroughly before starting the installation and follow them carefully throughout.

4.3 WARRANTY

All 7.5HP AQUAMASTER® MASTERS® GRAND SERIES FOUNTAIN AERATORS motor, seal assembly, float and underwater power cable (referred to as in-water components) are covered under warranty at 100% replacement cost should it fail due to defects in materials or workmanship for a period of 4 years on parts and labor. This is in effect from the date of shipment, when given normal and proper usage as determined by The Seller upon examination, and when owned by the original user.

FOUNTAIN AERATOR LIGHTING SYSTEMS AND OPTIONS SPECIFICATIONS

5.0 LIGHTING SYSTEM shall be LED/RGBW _____ Volt/Watts, Model #(s)_____. There are _____ total fixtures, containing _____ (choose color(s) if applicable: white, warm white, amber, blue, red, or green) color board assemblies.

5.1 A total length of _____ feet of _____ gauge 3(LED) or 5(RGBW) conductor underwater power cable is required. Reference cable sizing chart.

Please refer to TABLE 4 to assist in the completion of SECTION 5.

6.0 DESCRIPTION - LIGHTING

- A. **Light Set** shall consist of line voltage (120 VAC) 22W LED, 35W LED, or 40W RGBW LED lighting system with either 4, 6, or 8 lights.
- B. **Lights** shall consist of a power supply/driver module with a 22W, 35W, or 40W RGBW (10W red, 10W green, 10W blue, 10W white) LED light engine.
- C. **Light Fixture** shall be of Series 316 Stainless Steel construction. They shall have a permanent series 316 stainless steel electrical hub welded on the bottom of the housing to allow electrical cable entry and be mounted with series 316 stainless steel brackets and fasteners.
- D. **Light Fixture Assembly** shall consist of a lens made of tempered glass with a clear non-diffusing surface with a minimum of 5/32nd thickness and sealed with "V" shaped lens gasket made of silicon. Clamp ring shall be of series 316 stainless steel. Fasteners and mounting hardware shall be of series 316 stainless steel.
- E. **Underwater Pin and Socket Connector** shall consist of a Series 900, IP68 pin and socket connector. It shall be of a 3(LED) or 5(RGBW) pin configuration rated 32 Amps at 600 VAC. The pin and socket ends shall each be attached to a UL Listed underwater power cable rated at 600 Volts. They both shall be permanently secured to their UL Listed power cables by an integrated neoprene grommet and compression nut assembly. These assemblies shall be epoxy filled to prevent entry of water or any other foreign matter. The pin end assembly shall be permanently attached to the light fixture with a nonmetallic connector and potted using a flexible approved potting compound. The socket end assembly shall be permanently attached to the power cable. Both the pin end and socket end assemblies come with protector caps.
- F. **Underwater Power Cable** shall be UL Listed and specifically designed for underwater use. The conductors are flexible, stranded copper wire sized for the amp draw and length of run. The conductors shall be resistant to oil, water and cracking. Power cable shall be fitted with a cable strain relief device, located within five feet of the first light fixture. This will ensure that no potential damage can occur to any cable connections, due to tension on the cable.
- G. **Light Controls** shall consist of a GFCI (Ground Fault Circuit Interrupter), overcurrent protection (fuse), digital timer with battery back-up. The RGBW controller (optional) is pre-programmed with assorted color, shows and holiday themed selectable programs. The controller can also adjust program speed and brightness. The standard controller shall consist of a programmable controller with push button interface.
- H. **Safety Testing** shall be tested and approved as a complete assembly. This approval must meet Underwriters Laboratories Inc. requirements in compliance with UL category 676: Underwater Luminaires.
- I. **Warranty** on all AQUAMASTER LIGHTING SYSTEMS are covered under warranty at 100% replacement cost should it fail due to defects in materials or workmanship for a period of 3 years.

TABLE 1: MASTERS® GRAND SERIES PERFORMANCE SPECIFICATIONS

**TECHNICAL DATA
REFERENCE MATERIAL FOR SECTION 2.0 DETAILED INFORMATION**

Model Number	HP	Voltage and Phase	Running Amp Draw	Minimum Operating Depth	Ship Weight LBS.	LAKEWOOD FULL FLOW (no nozzle)	MGS BASIC FLOW PATTERN
							Biscayne
MGS5472-SC	7.5	220-240V 1PH	42	4'	675 lbs.	17.6 x 40 GPM 700	Upper 29 Lower 16.6 x 32 GPM 480
MGS5472-3SC		220-240V 3PH	26.4				
MGS5474-3SC		440-480V 3PH	13.2				
Model Number	HP	Voltage and Phase	Running Amp Draw	MGS BASIC FLOW PATTERNS			
				Crown & Geyser	Crown & Wide Geyser	Crystal Geyser	Wide Geyser
MGS5472-SC	7.5	220-240V 1PH	42	Geyser Ht 28 x 2 Crown 10 x 50 GPM 505	Geyser Ht 28 x 6 Crown 11 x 54 GPM 505	28 x 40 GPM 489	36 x 10 GPM 330
MGS5472-3SC		220-240V 3PH	26.4				
MGS5474-3SC		440-480V 3PH	13.2				
Model Number	HP	Voltage and Phase	Running Amp Draw	MGS STRAIGHTENED FLOW PATTERNS			
				Augusta	Valhalla	Medinah	Firestone
MGS5472-SC	7.5	220-240V 1PH	42	20 x 50 GPM 532	Upper 29 Middle 15.6 x 42 Lower 10 x 65 GPM 465	20 x 26 GPM 555	Upper 22 Middle 12 x 26 Lower 8 x 60 GPM 562
MGS5472-3SC		220-240V 3PH	26.4				
MGS5474-3SC		440-480V 3PH	13.2				
Model Number	HP	Voltage and Phase	Running Amp Draw	MGS STRAIGHTENED FLOW PATTERNS			
				Prestwick			
MGS5472-SC	7.5	220-240V 1PH	42	Upper 16 x 32 Lower 8 x 48 GPM 574			
MGS5472-3SC		220-240V 3PH	26.4				
MGS5474-3SC		440-480V 3PH	13.2				

Your overall performance may vary due to actual voltage, intake restrictions and cable lengths.

TABLE 2: CABLE SIZING CHARTS

*Maximum recommended length (in feet) from fountain aerator to control panel
AquaMaster® recommends consulting a Licensed Electrician to properly size any underground cable from the main power source to our control panel. Cable runs to the panel located away from main power source requires recalculating voltage drop to insure proper cable sizing. Please contact AquaMaster® if assistance is required.*

Cable must be purchased in 50ft increments

4 conductor: Required on all 7.5HP Single Phase & Three Phase Aerators									
Single Phase 4 conductor			4 conductor Copper Wire Gauge Size						
Unit	Volts	Approx Amps	#14	#12	#10	#8	#6	#4	#2
7.5HP	220-240 *	42.0	--	--	--	150	250	400	650

* Requires a minimum voltage of 220.

Three Phase 4 conductor			4 conductor Copper Wire Gauge Size						
Unit	Volts	Approx Amps	#14	#12	#10	#8	#6	#4	#2
7.5HP	220-240 *	26.4	--	--	--	300	450	750	1200
7.5HP	440-480	13.2	--	450	800	1200	1950	3100	4800

* Requires a minimum voltage of 220.

Actual voltage to motor will affect your fountain's performance.

TABLE 3: FOUNTAIN AERATOR SPRAY PATTERN DESCRIPTIONS

1. **Masters® Grand Series AUGUSTA – Straightened Flow Pattern (SFP)**
Beautiful multi-tiered streamed pattern with a center geyser to add height.
SPECIFICATION DESCRIPTION: FAN SHAPE INDIVIDUAL STREAMS WITH CENTER GEYSER
2. **Masters® Grand Series BISCAYNE – Basic Flow Pattern (BFP)**
Variation of classic two-tier with taller, narrower lower spray.
SPECIFICATION DESCRIPTION: UPRIGHT FAN & COLUMN
3. **Masters® Grand Series CROWN & GEYSER – Basic Flow Pattern (BFP)**
A beautiful, dramatic pattern still achieves aeration results. This nozzle combines the Lakewood Full Flow with the vertical Geyser column of water through its center.
SPECIFICATION DESCRIPTION: COMBINED FAN & COLUMN
4. **Masters® Grand Series CROWN & WIDE GEYSER - Basic Flow Pattern (BFP)**
A variation on our CROWN & GEYSER pattern. This nozzle produces a wider, less dense geyser column with a Lakewood Full Flow.
SPECIFICATION DESCRIPTION: COMBINED FAN & COLUMN
5. **Masters® Grand Series CRYSTAL GEYSER– Basic Flow Pattern (BFP)**
This nozzle produces a very decorative crystalline spray pattern in an abstract, multi-tiered formation.
SPECIFICATION DESCRIPTION: FROTHY SPRAY
6. **Masters® Grand Series FIRESTONE – Straightened Flow Pattern (SFP)**
Beautiful tri-tier, perfect for smaller area applications.
SPECIFICATION DESCRIPTION: TRI-TIER MULTIPLE STREAMS
7. **LAKWOOD FULL FLOW – Basic Flow Pattern (BFP)**
Internal impeller technology creates this full, more upright cone pattern, **without a nozzle**. This is the base model for The Masters Grand Series®.
SPECIFICATION DESCRIPTION: FAN SHAPE
8. **Masters® Grand Series MEDINAH – Straightened Flow Pattern (SFP)**
Upright funnel shape creates a stunning full profile pattern.
SPECIFICATION DESCRIPTION: NARROW FAN SHAPE
9. **Masters® Grand Series PRESTWICK – Straightened Flow Pattern (SFP)**
Dramatic multi-streamed two-tiered pattern.
SPECIFICATION DESCRIPTION: TWO-TIERED MULTIPLE STREAMS

10. **Masters® Grand Series VALHALLA – Straightened Flow Pattern (SFP)**
Stunning tri-tier resulting in both excellent height and diameter.
SPECIFICATION DESCRIPTION: TRI-TIER SPRAY

11. **Masters® Grand Series WIDE GEYSER – Basic Flow Pattern (BFP)**
A modification of the Geyser nozzle produces a less dense, more decorative version.
SPECIFICATION DESCRIPTION: WIDE VERTICAL COLUMN

TABLE 4: FOUNTAIN AERATOR LIGHTING SYSTEMS

AQUAMASTER® FOUNTAIN AERATORS are even more dramatic at night, with the addition of a UL and cUL Listed NIGHT GLOW LIGHTING SYSTEM.

Any lighting system choice includes stainless steel lamp housings, ready to be installed in the float, sealed with clear tempered glass lenses in a stainless steel clamp ring. Minimal installation is required. All lights remain water-cooled and out of sight below the surface.

All necessary electrical controls, including timer, are pre-wired into the fountain aerator’s existing UL Listed control panel. Color board assemblies (Cool White, Warm White, Red, Green, Blue, or Amber) must be selected for each light.

For uniformity of spray pattern coverage, 4 lights minimum is recommended.

LINE VOLTAGE: 120 Volt LED Lighting Systems

22 Watt LED Fixtures	Each system includes:
4 light system: Model # 3000934-316	
6 light system: Model # 3003976-316	
8 light system: Model # 3003977-316	
35 Watt LED Fixtures	
4 light system: Model # 3000936-316	
6 light system: Model # 3003978-316	
8 light system: Model # 3003979-316	

LINE VOLTAGE: 120 Volt RGBW LED Lighting Systems

40 Watt Fixtures	Each system includes:
4 light system: Model # 30000938-316	
6 light system: Model # 3003980-316	
8 light system: Model # 3003981-316	

TABLE 4: FOUNTAIN AERATOR LIGHTING SYSTEMS (cont.)

CABLE SIZING CHART FOR LED LIGHTS

*Maximum recommended length (in feet) from fountain lights to control panel.
AquaMaster® recommends consulting a Licensed Electrician to properly size any underground cable from the main power source to our control panel. Cable runs to the panel located away from main power source requires recalculating voltage drop to insure proper cable sizing. Please contact AquaMaster® if assistance is required.*

Cable must be purchased in 50ft increments

3 Conductor				Copper Wire Gauge Size		
Watts Per Fixture	# of Fixtures	Volts	Approx Amps	#14	#12	#10
22	4	120	0.567	1700	2600	4400
22	6	120	0.850	1100	1750	2900
22	8	120	1.133	850	1300	2200
35	4	120	1.167	800	1250	2100
35	6	120	1.750	550	850	1400
35	8	120	2.333	400	600	1050

CABLE SIZING CHART FOR RGBW LED LIGHTS

5 Conductor				Copper Wire Gauge Size	
Watts Per Fixture	# of Fixtures	Volts	Approx Amps	#14	#10
40	4	120	1.333	700	1850
40	6	120	2.000	450	1250
40	8	120	2.667	350	900

SPECIFICATIONS

NIGHT GLOW LIGHTING SYSTEM

11W, 22W, and 35W LED LIGHTS

1.0 DESCRIPTION

- A. **Light Set** shall consist of line voltage (120 or 220 VAC) 11W, 22W, or 35W LED lighting system with either 2, 3, 4, 6, 8 or 12 lights.
- B. **Lights** shall consist of a power supply/driver module with a 11W, 22W or 35W LED engine.
- C. **Light Fixture** shall be of Series 300 Stainless Steel construction. They shall have a permanent series 300 stainless steel electrical hub welded on the bottom of the housing to allow electrical cable entry and be mounted with series 300 stainless steel brackets and fasteners.
- D. **Light Fixture Assembly** shall consist of a lens made of tempered glass with a clear non-diffusing surface with a minimum of 5/32nd thickness and sealed with "V" shaped lens gasket made of silicon. Clamp ring shall be of series 300 stainless steel. Fasteners and mounting hardware shall be of series 300 stainless steel.
- E. **Underwater Pin and Socket Connector** shall consist of a Series 900, IP68 pin and socket connector. It shall be of a 3 pin configuration rated 32 Amps at 600 VAC. The pin and socket ends shall each be attached to a UL Listed underwater power cable rated at 600 Volts. They both shall be permanently secured to their UL Listed power cables by an integrated neoprene grommet and compression nut assembly. These assemblies shall be epoxy filled to prevent entry of water or any other foreign matter. The pin end assembly shall be permanently attached to the light fixture with a nonmetallic connector and potted using a flexible approved potting compound. The socket end assembly shall be permanently attached to the power cable. Both the pin end and socket end assemblies come with protector caps.
- F. **Underwater Power Cable** shall be UL Listed and specifically designed for underwater use. The conductors are flexible, stranded copper wire sized for the amp draw and length of run. The conductors shall be resistant to oil, water and cracking. Power cable shall be fitted with a cable strain relief device, located within five feet of the first light fixture. This will ensure that no potential damage can occur to any cable connections, due to tension on the cable.
- G. **Light Controls** shall consist of a GFCI (Ground Fault Circuit Interrupter), overcurrent protection (fuse), and digital timer with battery back-up. The Sequencer (optional) shall be capable of cycling light fixtures on and off, up to 8 fixtures.
- H. **Safety Testing** shall be tested and approved as a complete assembly. This approval must meet Underwriters Laboratories Inc. requirements in compliance with UL Category 676: Underwater Luminaires.
- I. **Warranty** on all AQUAMASTER[®] LIGHTING SYSTEMS are covered under warranty at 100% replacement cost should it fail due to defects in materials or workmanship for a period of 3 years.

SPECIFICATIONS

NIGHT GLOW LIGHTING SYSTEM

11W, 22W, and 35W LED LIGHTS

- J. **Acceptable Manufacturer** for the LED Lighting System shall be AQUAMASTER® FOUNTAINS AND AERATORS, 16024 CTH X, Kiel, WI 53042, (800) 693-3144, www.aquamasterfountains.com
- K. **Installation** shall be done in accordance with the installation instructions and in compliance with all local and National Electrical Code requirements. Any alterations to or substitution for items in this system, unless allowed by the installation instructions, will void the Underwriters Laboratories Listing and will void the product Warranty. Read the instructions thoroughly before starting the installation and follow them carefully throughout.

2.0 DETAILED INFORMATION

- A. This specification is intended to provide prospective bidders the necessary information pertaining to the LED Lights specified for the _____ Project.
- B. **Lighting System** shall be _____(watts) LED Lights with _____ total fixtures.
- C. **Cable Length** shall be _____ feet total of _____ gauge, 3 conductor underwater power cable (see Table 1).
- D. **Light Set** shall be used on the following
 - ___ Masters Series 1/2-5HP
 - ___ Masters Series 7.5-10HP
 - ___ Classic LE
 - ___ Celestial Fountains
 - ___ Fixed Base Water Feature Fountains
 - ___ Volcano II Floating Aerator
 - ___ Other fountain, please specify _____
 - ___ Other Water Feature, please specify _____

TABLE 1: CABLE SIZING CHART FOR LED LIGHTS

Maximum recommended length (in ft) from light set to control panel. AquaMaster® recommends consulting a Licensed Electrician to properly size any underground cable from the main power source to our control panel. Cable runs to the panel located away from main power source requires recalculating voltage drop to ensure proper cable sizing. Please contact AquaMaster® if assistance is required.

Watts Per Fixture	3 Conductor			Copper Wire Gauge Size		
	# of Fixtures	Volts	Approx Amps	#14	#12	#10
11	2	120	0.183	5279	8182	13636
11	3	120	0.275	3519	5455	9091
11	4	120	0.367	2639	4091	6818
11	6	120	0.550	1760	2727	4545

SPECIFICATIONS NIGHT GLOW LIGHTING SYSTEM 11W, 22W, and 35W LED LIGHTS

11	8	120	0.733	1320	2045	3409
22	2	120	0.283	3416	5294	8824
22	3	120	0.425	2277	3529	5882
22	4	120	0.567	1708	2647	4412
22	6	120	0.850	1139	1765	2941
22	8	120	1.133	854	1324	2206
22	12	120	1.700	569	882	1471
35	2	120	0.583	1659	2571	4286
35	3	120	0.875	1106	1714	2857
35	4	120	1.167	829	1286	2143
35	6	120	1.750	553	857	1429
35	8	120	2.330	415	643	1071
35	12	120	3.500	276	429	714

TABLE 2: CABLE SIZING CHART FOR LIGHTS WHEN ORDERED WITH A SEQUENCER

3 & 4 Conductor (see notes below)			Copper Wire Gauge Size		
Watts Per Fixture	# of Fixtures	Volts	#14 (ft)	#12 (ft)	#10 (ft)
11	3 or 4	120	10558	16364	27272
11	6 (3 colors)	120	5279	8182	13636
11	8 (4 colors)	120	5279	8182	13636
22	3 or 4	120	6832	10588	17648
22	6 (3 colors)	120	3416	5294	8824
22	8 (4 colors)	120	3416	5294	8824
35	3 or 4	120	3318	5142	8572
35	6 (3 colors)	120	1659	2571	4286
35	8 (4 colors)	120	1659	2571	4286

Lighting Sequencer requires 2 runs of cable:

- 1) Sequencer with 3 colors requires (1) run of 3 conductor cable and (1) run of 4 conductor cable
- 2) Sequencer with 4 colors requires (2) runs of 4 conductor cable

Note: For configurations not listed in this chart, contact the factory.

Filename: LED Lighting Specs 5-2015
Directory: C:\Users\BBuvid\Documents
Template: C:\Users\BBuvid\AppData\Roaming\Microsoft\Templates\Normal.dotm
Title: SPECIFICATIONS
Subject:
Author: Sherrie Woelfel
Keywords:
Comments: Specifications for aerators
Creation Date: 5/22/2015 9:37:00 AM
Change Number: 4
Last Saved On: 5/27/2015 1:41:00 PM
Last Saved By: Blake Buvid
Total Editing Time: 15 Minutes
Last Printed On: 5/27/2015 1:47:00 PM
As of Last Complete Printing
Number of Pages: 3
Number of Words: 901 (approx.)
Number of Characters: 5,140 (approx.)

SPECIFICATIONS
AQUAAIR® ULTRA 2, 3, and 4 SHALLOW WATER DIFFUSED AIR AERATION
SYSTEM

1.0 GENERAL

1.1 DESCRIPTION

- A. Manufacturer shall furnish a diffused air aeration system capable of pumping a synergistic air/water lift from the bottom of a body of water to maximum depth of 35' (8' for 4 Shallow).
- B. An on-shore compressor, powered by an electric motor, shall pump air through an individual air supply tube to a bottom-mounted diffuser assembly located in the body of water.
- C. The air shall be dispersed through a diffuser assembly that is then transferred vertically with entrained water to the surface of the water body, utilizing micro-bubble technology.
- D. This continuous action shall effectively mix, de-stratify, and transfer atmospheric oxygen throughout the body of water.

1.2 AERATION SYSTEM COMPONENTS DESCRIPTION

- A. **Compressor** – 1/2HP dual head, 1 phase, wobble piston built for continuous operation and equipped with thermal overload protection, pressure relief valves, and mufflers for quiet operation. It shall be oil-free and require periodic preventative maintenance after every 18 months of run time which consists of a piston replacement kit and air filters. At 5PSI the compressor shall produce 5.0CFM while operating at approximately 3.5 amps @ 120V, 1.7 amps @240V. At 25PSI the compressor shall produce 4.2CFM while operating at approximately 5.0 amps @ 120V, 2.5 amps @ 240V.
- B. **Compressor Cabinet** – Enclosure shall be rectangular in design and be constructed of minimum 16-gauge stainless steel. Enclosure shall be fully gasketed and equipped with padlock for security, ventilation to provide forced air circulation and an integral cooling fan with thermal protection, producing 115 CFM to guard against excessive compressor operating temperatures. Includes power cord with NEMA 5-15 plug for 120V systems (15A service required) and NEMA 6-15 plug for 240V systems (15A service required).
- C. **Diffuser Assemblies** shall be mounted on a round, hollow chamber base constructed of linear low density polyethylene material. Base shall be capable of being filled with pea gravel for weighting or come pre-weighted with sand media. Base shall be designed with a back-flow check valve and adjustable diffuser riser capability to accommodate site requirements.
 - I. **Single Membrane (SM)** – consists of (1) 12" diameter, self-cleaning, flexible, fluoroelastomer layered, fine bubble, EPDM membrane diffuser with 100% rebound memory. It shall provide superior resistance to fouling,

calcium scaling, chemicals, fats, oils, grease, hydrocarbons, fuels and solvents. It shall produce millions of fine bubbles.

II. Dual Membrane (DM) – consists of (2) 12" diameter diffusers referenced above.

- D. **Weighted Air Supply Tubing** – Self-weighted, direct burial submersible tubing for connection from compressor to diffuser assembly. Tubing shall be of flexible PVC composite construction for use with standard PVC solvent weld cement and 0.5" insert fittings. 1/2" tubing shall have 0.58" ID X 1.06" OD for long term durability and protection against punctures. It shall remain flexible in cold temperatures.
- E. **Remote Manifold with Valve Box** (optional) – eliminates the need for multiple air line runs in the ground when the cabinet is located away from the pond's edge.

DIFFUSED AIR AERATION DETAIL SPECIFICATIONS

2.0 DETAILED INFORMATION

- 2.1 This specification is intended to provide prospective bidders the necessary information pertaining to the diffused air aeration system specified for the _____ Project.
- 2.2 The compressor shall be 1/2HP dual head, operating at 120 or 240 Volts (circle one), 60 Hertz, 1 Phase.
- 2.3 The MODEL specified shall be AquaAir® Ultra 3 or 4 Shallow MODEL NUMBER 94103/94104S (120V) OR 94203/94204S (240V) (circle choice). It shall come complete with cabinet, compressor, Two to Four Single Membrane (SM), or Dual Membrane (DM) diffuser assemblies (circle one) and _____ feet of weighted air supply tubing. Tubing lengths are as follows: Diffuser A _____ feet, Diffuser B _____ feet, Diffuser C (if applicable) _____ feet, Diffuser D (if applicable) _____ feet.
- 2.4 Remote Manifold with Valve Box Option: Yes _____ No _____ If yes, add Remote Manifold part number to order, and specify the type and size of the air line from the cabinet to the remote manifold _____

3.0 INSTALLATION

The cabinet and compressor must be installed in accordance with the installation instructions, in compliance with all local and National Electrical Code requirements. This should be done by a licensed electrical contractor. Any alterations to or substitution for items in this system, unless allowed by the installation instructions, will void the manufacturer's warranty. It may also create a hazardous installation. Read the instructions thoroughly before starting the installation and follow them carefully throughout.

4.0 SAFETY TESTING

The diffused air aeration system shall be tested and approved as a complete unit. This approval must meet Underwriters Laboratories Inc. requirements in compliance with Category 1450: Motor Operated Air Compressors.

5.0 ACCEPTABLE MANUFACTURER

This diffused air aeration system, as specified in Section 2, shall be manufactured by AQUAMASTER® FOUNTAINS AND AERATORS, 16024 County Road X, Kiel, WI 53042, 920-693-3121, or approved equal.

6.0 WARRANTY

All AquaMaster® AquaAir® Ultra Diffused Air Aeration Systems have a Limited Lifetime Warranty on the cabinet, 15 years on the tubing, 5 years on the diffuser assembly, and all other components including compressor and cooling fan have a 3 year warranty (excludes wear items including piston assembly and rotary vanes,

System	# of Diffusers	Cabinet Size	Compressor(s)	Total Amp Draw	Total Air Flow	Air Flow per Diffuser
AquaAir Ultra 2	2	Small	(1)1/2HP	3.5 - 5A @ 120V* 1.7 - 2.5A @ 240V**	5 CFM	2.5 CFM
AquaAir Ultra 3	3	Small	(1)1/2HP	3.5 - 5A @ 120V* 1.7 - 2.5A @ 240V**	5 CFM	1.7 CFM
AquaAir Ultra 4S	4	Small	(1)1/2HP	3.5 - 5A @ 120V* 1.7 - 2.5A @ 240V**	5 CFM	1.25 CFM

CFM = Cubic Feet per Minute (Air Flow)
*15 Amp Service, NEMA 5-15 Plug
**15 Amp Service, NEMA 6-15 Plug

consult factory for assistance). Warranty is in effect from the date of shipment, when given normal and proper usage as determined by the seller upon examination, and when owned by the original user.



Warranty at a Glance - 2025

Masters Series		
1 - 5HP		63 Months Parts and Labor
Maintenance schedule - 36 months for initial service, every 24 months thereafter. See owner's manual.		
Masters Grand Series		
7.5HP		51 Months Parts and Labor
Maintenance schedule - 36 months for initial service, every 24 months thereafter. See owner's manual.		
Masters Decorative Series		
1/2HP (with Upgraded Panel)		63 Months Parts and Labor
		39 Months Parts and Labor
Maintenance schedule - 24 months for initial service, every 24 months thereafter. See owner's manual.		
Galaxy Select Fountains		
10 - 25HP Three-Phase Units		51 Months Parts and Labor
10HP Single Phase Units		39 Months Parts and Labor
Maintenance schedule - See owner's manual.		
Volcano III		
1.5 - 5.5HP		63 Months Parts and Labor
Maintenance schedule - 36 months for initial service, every 24 months thereafter. See owner's manual.		
Volcano II and Hydromax Series		
1/2HP		39 Months Parts and Labor
1.5 - 5.5HP		63 Months Parts and Labor
Maintenance schedule - 36 months for initial service, every 24 months thereafter. See owner's manual.		
Fixed Base Water Feature Fountains		
1/2HP		63 Months Parts and Labor
1 - 5HP		63 Months Parts and Labor
Maintenance schedule - 36 months for initial service, every 24 months thereafter. See owner's manual.		
Night Glow Lighting		
LED	11W, 22W, 35W	36 Months Parts and Labor (all components)
RGBW	40 W and 72W	36 Months Parts and Labor (all components)
Any Lights without an ALC		12 Months Warranty
Land Master Landscape Lighting		
Encompass LED Lights		36 Months Parts and Labor (all components)
Encompass RGBW Lights		36 Months Parts and Labor (all components)
Horizon LED Step Light		36 Months Parts and Labor (all components)
Solstice Transformer		60 Months Parts and Labor (all components)
Cable, Lighting		12 Months Parts and Labor
Electrical Control Panel		
All Voltages (upgraded panel)		39 Months Parts and Labor
AquaAir Ultra		
Compressor** & Cooling Fan		36 Months Parts and Labor
**Vanes and Pistons are considered "Wear Items" and are not covered under the factory warranty, consult factory for assistance		
*Base and Wall Mounted AquaAir units without an enclosure are not UL or cUL listed and carry a 1 year warranty		
Enclosure		Limited Lifetime Warranty (Against Corrosion)
All other Components		60 Months Parts and Labor
Super Sink Tubing		180 Months (Manufacturer Defect)
Valve Box and Remote Manifold		12 Months Parts and Labor
Replacement Compressor		12 Months Parts and Labor
Solar AquaAir Ultra		
9" Diffuser Assembly		Same as above for common Components
Solar Panels		60 Months Parts and Labor
Electrical Components and Batteries		12 Months (Manufacturer Defect)
Complete Unit and/or Replacement Power Unit (Less Panel and or Cable)		
1/2HP		24 Months Parts and Labor
1-5.5HP		36 Months Parts and Labor
7.5-25HP		24 Months Parts and Labor
Parts		
Parts, mechanical or electrical		12 Months
Cable, all sizes		36 Months
Discontinued Series		
Celestial Fountains		
10 - 25HP		48 Months Parts and Labor
Masters Series		
10HP		48 Months Parts and Labor
Ultimax Series		
1/2HP		24 Months Parts and Labor
1 - 5HP		36 Months Parts and Labor
Electrical Control Panel		
1/2HP MDS Standard Panel		12 Months Parts and Labor
Warranty only applicable for In-Service Units still under purchase warranty period		
Any modifications made to AquaMaster units that have been installed will void the warranty on those units. To protect the Manufacturer's warranty on any Aquamaster Fountains, a trained service provider must do the repairs. Only parts manufactured by and purchased from AquaMaster Fountains are covered by our full warranty.		